

OssKin 3D Scan


Scanning Best Practices

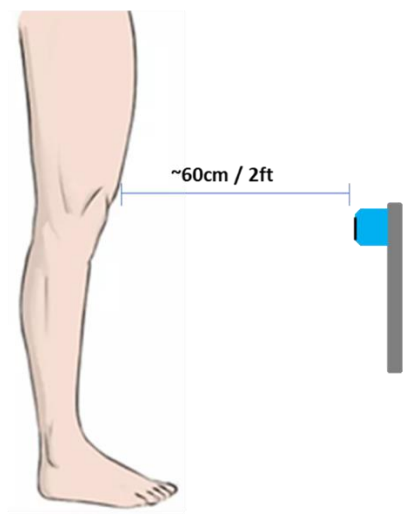



OssKin

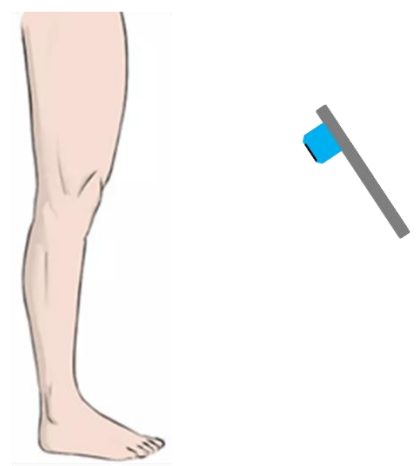


1.) Proper scan box placement


 At the moment of pressing Start to scan, the iPad must be **Perpendicular** to the floor & the Structure Sensor must be at **mid-patella height**

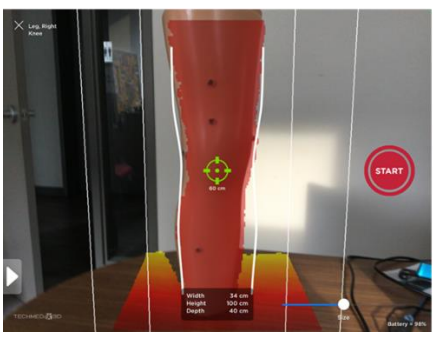



 At the moment of pressing Start to scan, do not angle the Ip=Pad downwards or upwards

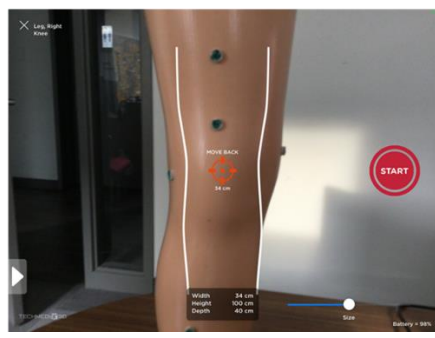



2.) Proper iPad distance to object

 Scanned object is covered with **Dark Red** color. Approximately **60cm** from scanned object



 iPad is too close to scanned object. **Dark Red** color does not appear on object.



 iPad is too far from scanned object. **Dark Red** color does not appear on object.



3.) Ensure scans contain no holes, and the object is fully scanned



No holes, scan of full leg



Scan contains holes



Scan contains holes



Scan is too short

